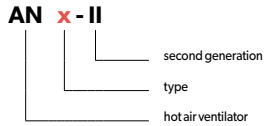


**AN-II HOT AIR VENTILATOR**



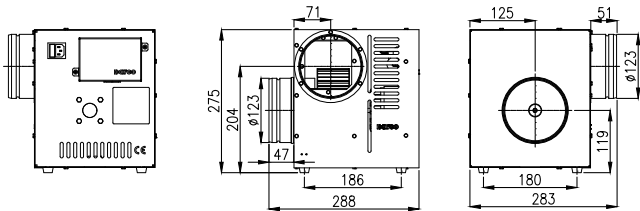
Destination	W	W - supply/exhaust ventilation
	O	O - air heating
Material	OC	OC - galvanised steel sheet

Technical data	AN1-II	AN2-II	AN3-II
Max. airflow [m <sup>3</sup> /h]	490	860	990
Max. pressure [Pa]	150	220	210
Max. transported air temperature [°C]		150	
Acoustic pressure [dB]		65	
Supply voltage [V/Hz]		230/50	
Rated power [W]	50	95	120
Max. current [A]	0.4	0.7	1.1
Power socket fuses		2A	
B1 fuse		100 mA (SCHUSTER 0034.6004)	
Max. ambient temperature [°C]		40	
IP protection class		IP20	
Weight [kg]	5.50	6.70	8.30

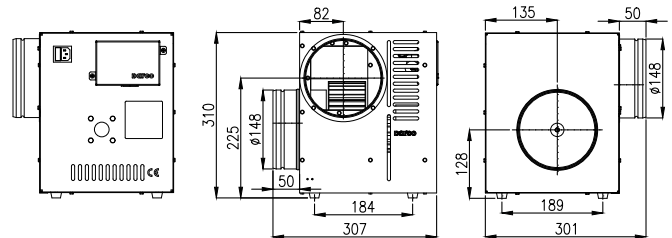


**Hot air ventilators - types / dimensions**

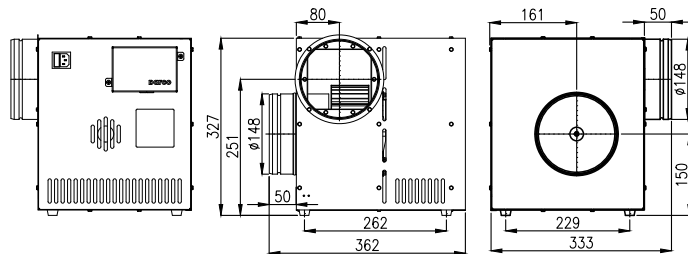
**AN1-II**



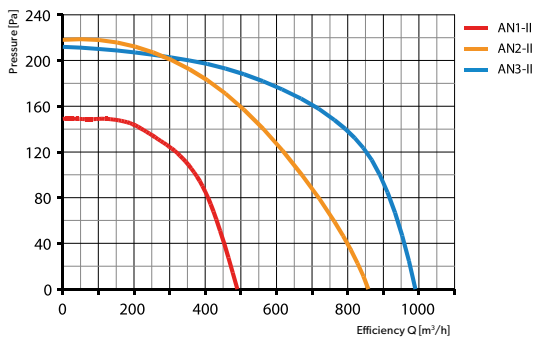
**AN2-II**



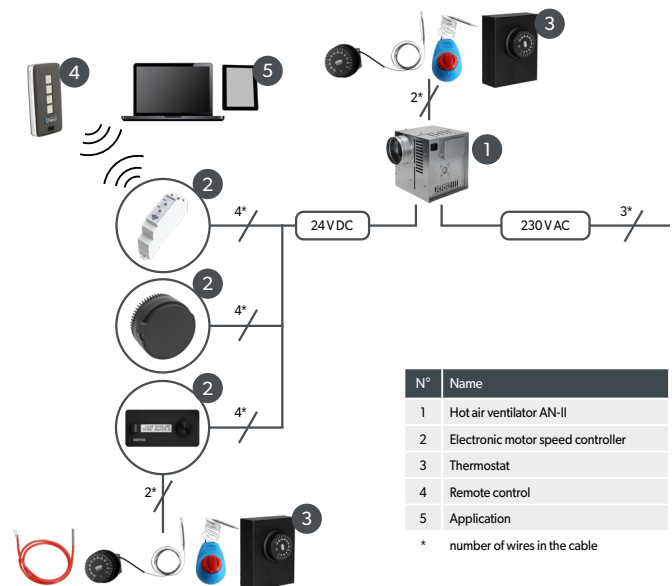
**AN3-II**



**Airflow chart**



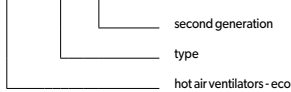
**Connecting diagram**



**ANeco-II HOT AIR VENTILATOR**



**ANeco x - II**

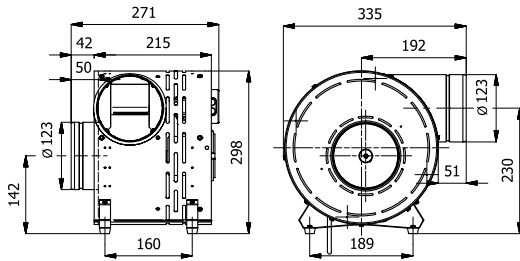


Destination	W	W - supply/exhaust ventilation
	O	O - air heating
Material	OC	OC - galvanised steel sheet

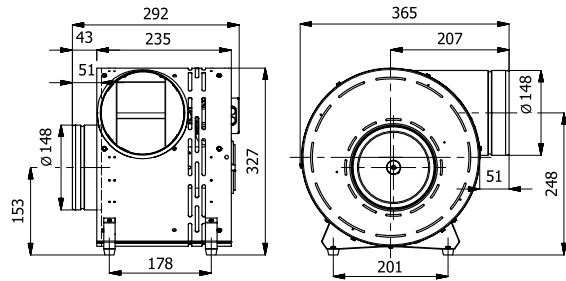
Technical data	ANeco1-II	ANeco2-II	ANeco3-II
Max. airflow [m <sup>3</sup> /h]	490	690	1080
Max. pressure [Pa]	150	180	205
Max. transported air temperature [°C]	150		
Supply voltage [V/Hz]	230/50		
Rated power [W]	30	50	125
Max. current [A]	0.7	0.7	1.4
Max. ambient temperature [°C]	40		
IP protection class	IP20		
Weight [kg]	6.30	7.30	8.30

**Hot air ventilators - types / dimensions**

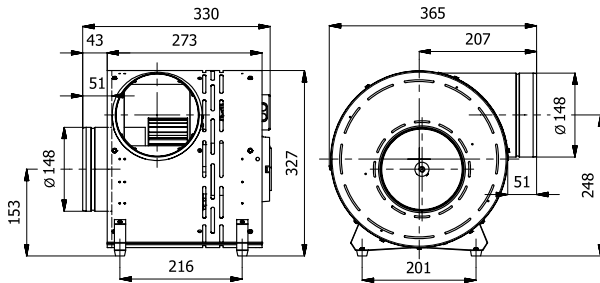
**ANeco1-II**



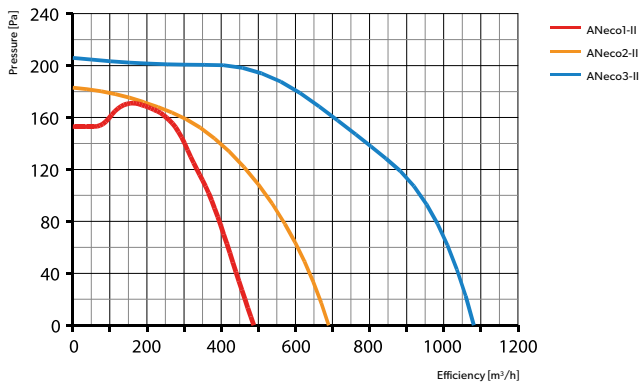
**ANeco2-II**



**ANeco3-II**



**Airflow chart**



**Connecting diagram**

