



Air intake set is equipped with a heater that preheats the air, significantly increasing efficiency of the stove and reducing smoke and dust emissions, particularly in the ignition phase. Air intake set also his equipped with a damper, which is used to regulate or close the air flow (which can be done manually, with a decorative knob or using an actuator). Air intake set channel is telescopic, what allows mounting it in walls of various thicknesses. Construction of the air intake allows easy access to the channel (for servicing or cleaning). Air exhaust (element mounted inside the room) is painted in a colour matching the REP / REPI flexible pipes and most free-standing stoves available on the market.

Usage

- Providing combustion air to fireplaces or stoves
- increasing efficiency of the stove
- reducing emission of the fireplace/stove

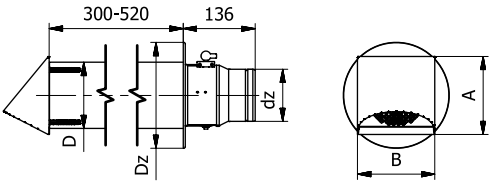
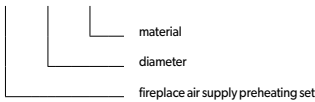


Diameter	ø100	ø150
A	147	197
B	146	196
D	125	175
Dz	200	250
dz	98,5	148,5
Voltage [V]	230	
Nominal power [W]	270	
Max current [A]	3	3.5
IP protection class	IP 33	
Weight (version with knob) [kg]	7.3	12.0
Weight (version with wire knob) [kg]	8.0	12.5
Weight (version with actuator) [kg]	8.5	13.0

Destination	W	W - supply ventilation
Material	CC	CC - chrome-nickel steel

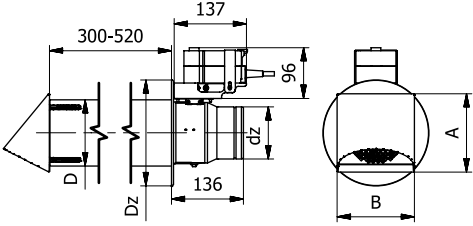
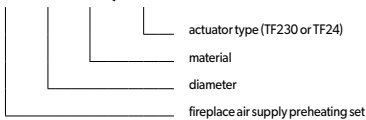
Fireplace air supply preheating set with knob

ZNK x - CC



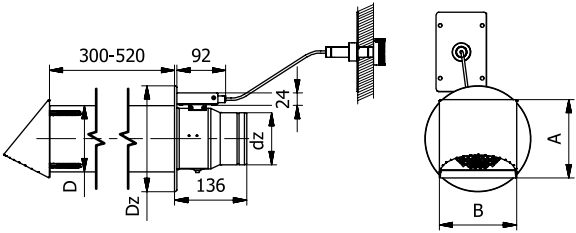
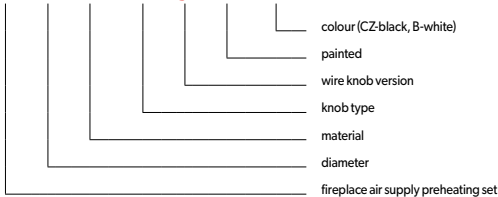
Fireplace air supply preheating set with electric actuator

ZNK x - CC / ...



Fireplace air supply preheating set with wire knob

ZNK x - CC / OS / y - ML - ...



invent. build. enjoy.