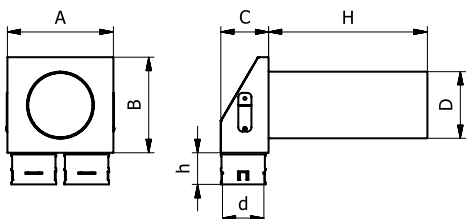


1. DISTRIBUTING BOX KLO



No	Denotation	Measurements [mm]							Weight [kg]
		ØD	Ød	A	B	C	H	h	
1	PP-KLO-2x75/125-OC/0,3	125	78	200	180	90	300	60	1,02

OC - galvanised steel sheet

Accessories:

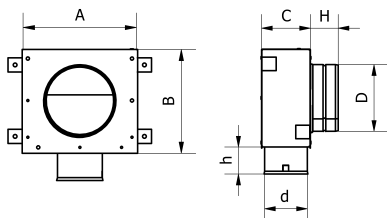
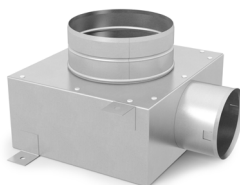


PLUG
ZATC75-PP



SEAL
UKZ75-1

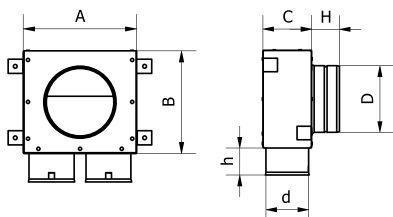
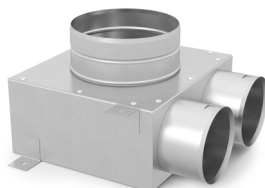
2. DISTRIBUTING BOX KLO



No	Denotation	Measurements [mm]							Weight [kg]
		ØD	Ød	A	B	C	H	h	
1	KLO-1x63/fi125-OC	123	68	200	180	80	50	50	0,80
2	KLO-1x75/fi125-OC	123	78	200	180	90	50	50	0,85
3	KLO-1x90/fi125-OC	123	93	200	180	105	50	50	0,90

OC - galvanised steel sheet

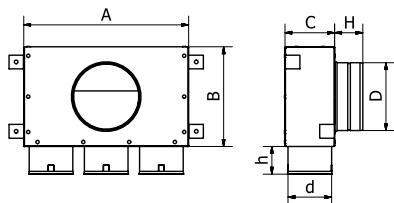
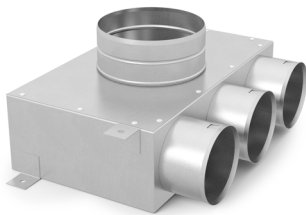
3. DISTRIBUTING BOX KLO



No	Denotation	Measurements [mm]							Weight [kg]
		ØD	Ød	A	B	C	H	h	
1	KLO-2x63/fi125-OC	123	68	200	180	80	50	50	0,85
2	KLO-2x75/fi125-OC	123	78	200	180	90	50	50	0,90
3	KLO-2x90/fi125-OC	123	93	230	180	105	50	50	1,00

OC - galvanised steel sheet

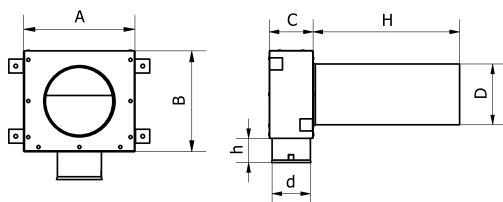
4. DISTRIBUTING BOX KLO



No	Denotation	Measurements [mm]							Weight [kg]
		ØD	Ød	A	B	C	H	h	
1	KLO-3x63/fi125-OC	123	68	300	180	80	50	50	1,10
2	KLO-3x75/fi125-OC	123	78	300	180	90	50	50	1,20
3	KLO-3x90/fi125-OC	123	93	350	180	105	50	50	1,30

OC - galvanised steel sheet

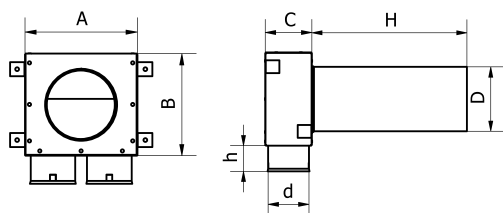
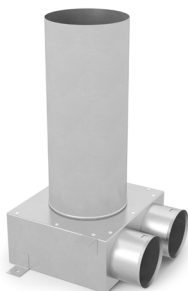
5. DISTRIBUTING BOX KLO



No	Denotation	Measurements [mm]							Weight [kg]
		ØD	Ød	A	B	C	H	h	
1	KLO-1x63/fi125-OC/0,3	125	68	200	180	80	300	50	1,20
2	KLO-1x75/fi125-OC/0,3	125	78	200	180	90	300	50	1,25
3	KLO-1x90/fi125-OC/0,3	125	93	200	180	105	300	55	1,30

OC - galvanised steel sheet

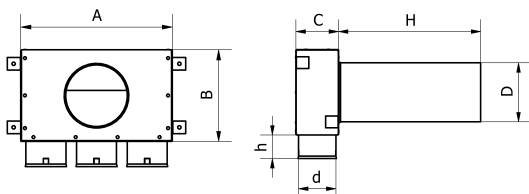
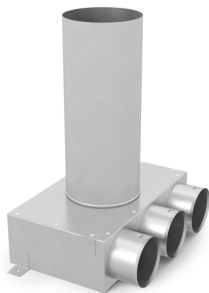
6. DISTRIBUTING BOX KLO



No	Denotation	Measurements [mm]							Weight [kg]
		ØD	Ød	A	B	C	H	h	
1	KLO-2x63/fi125-OC/0,3	125	68	200	180	80	300	50	1,20
2	KLO-2x75/fi125-OC/0,3	125	78	200	180	90	300	50	1,25
3	KLO-2x90/fi125-OC/0,3	125	93	230	180	105	300	50	1,40

OC - galvanised steel sheet

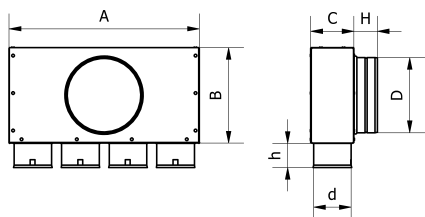
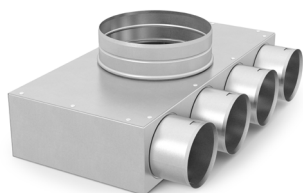
7. DISTRIBUTING BOX KLO



No	Denotation	Measurements [mm]							Weight [kg]
		ØD	Ød	A	B	C	H	h	
1	KLO-3x63/fil125-OC/0,3	125	68	300	180	80	300	50	1,50
2	KLO-3x75/fil125-OC/0,3	125	78	300	180	90	300	50	1,60
3	KLO-3x90/fil125-OC/0,3	125	93	350	180	105	300	55	1,70

OC - galvanised steel sheet

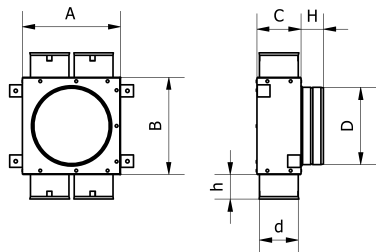
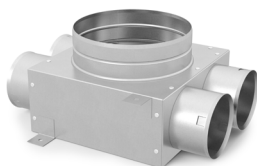
8. DISTRIBUTING BOX KLO



No	Denotation	Measurements [mm]							Weight [kg]
		ØD	Ød	A	B	C	H	h	
1	KLO-4x63/fil160-OC	158	68	400	200	80	50	50	1,70
2	KLO-4x75/fil160-OC	158	78	400	200	90	50	50	1,75
3	KLO-4x90/fil160-OC	158	93	460	200	105	50	50	2,00

OC - galvanised steel sheet

9. DISTRIBUTING BOX KLO-II



No	Denotation	Measurements [mm]							Weight [kg]
		ØD	Ød	A	B	C	H	h	
1	KLO-II-4x63/fil160-OC	158	68	200	200	80	50	50	0,85
2	KLO-II-4x75/fil160-OC	158	78	200	200	90	50	50	0,90
3	KLO-II-4x90/fil160-OC	158	93	230	200	105	50	50	1,00

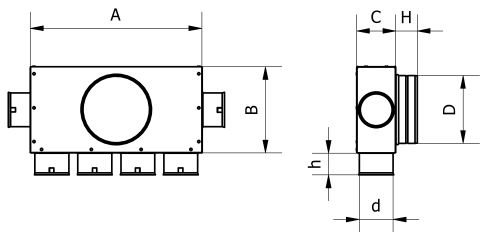
OC - galvanised steel sheet

10. DISTRIBUTING BOX KLO-III

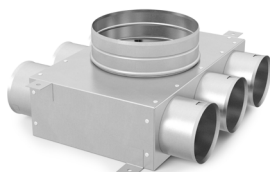


No	Denotation	Measurements [mm]							Weight [kg]
		ØD	Ød	A	B	C	H	h	
1	KLO-III-6x63/fi160-OC	158	68	400	200	80	50	50	1,75
2	KLO-III-6x75/fi160-OC	158	78	400	200	90	50	50	1,80
3	KLO-III-6x90/fi160-OC	158	93	460	200	105	50	50	1,90

OC - galvanised steel sheet

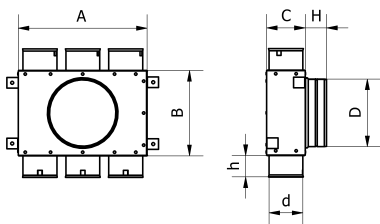


11. DISTRIBUTING BOX KLO-II

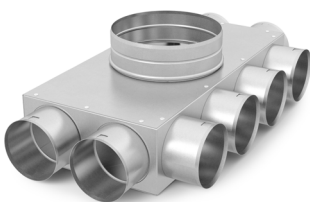


No	Denotation	Measurements [mm]							Weight [kg]
		ØD	Ød	A	B	C	H	h	
1	KLO-II-6x63/fi160-OC	158	68	300	200	80	50	50	1,10
2	KLO-II-6x75/fi160-OC	158	78	300	199	90	50	50	1,20
3	KLO-II-6x90/fi160-OC	158	93	350	200	105	50	50	1,60

OC - galvanised steel sheet

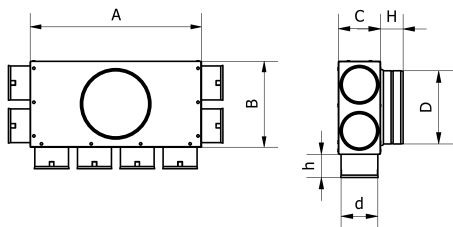


12. DISTRIBUTING BOX KLO-III

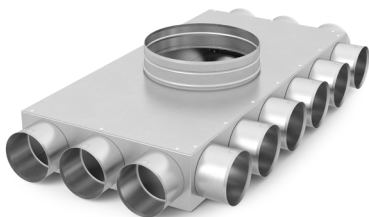


No	Denotation	Measurements [mm]							Weight [kg]
		ØD	Ød	A	B	C	H	h	
1	KLO-III-8x63/fi160-OC	158	68	400	200	80	50	50	1,80
2	KLO-III-8x75/fi160-OC	158	78	400	200	90	50	50	1,90
3	KLO-III-8x90/fi160-OC	158	93	460	200	105	50	50	2,00

OC - galvanised steel sheet

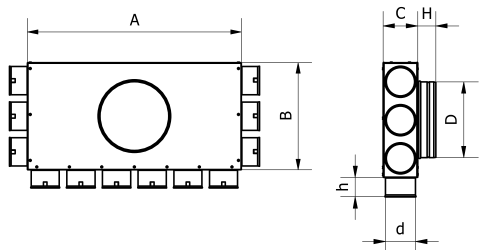


13. DISTRIBUTING BOX KLO-III

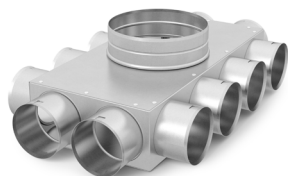


No	Denotation	Measurements [mm]							Weight [kg]
		ØD	Ød	A	B	C	H	h	
1	KLO-III-12x63/fi200-OC	198	68	600	300	80	45	50	3,40
2	KLO-III-12x75/fi200-OC	198	78	600	300	90	45	50	3,55
3	KLO-III-12x90/fi200-OC	199	93	690	350	105	45	50	3,80

OC - galvanised steel sheet

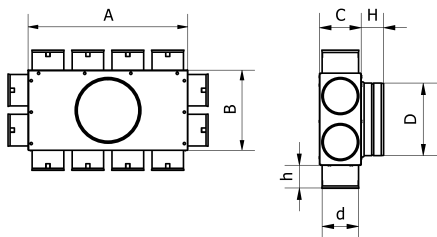


14. DISTRIBUTING BOX KLO-IV

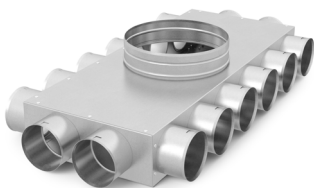


No	Denotation	Measurements [mm]							Weight [kg]
		ØD	Ød	A	B	C	H	h	
1	KLO-IV-12x63/fi160-OC	158	68	400	200	80	45	50	1,90
2	KLO-IV-12x75/fi160-OC	158	78	400	200	90	45	50	2,10
3	KLO-IV-12x90/fi160-OC	158	93	460	200	105	45	50	2,30

OC - galvanised steel sheet

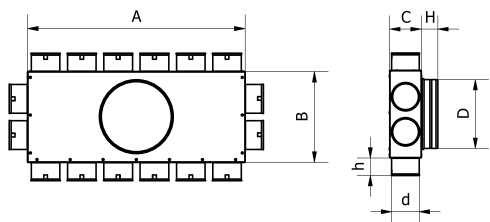


15. DISTRIBUTING BOX KLO-IV

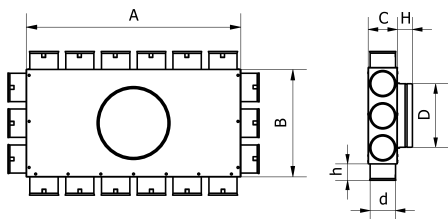
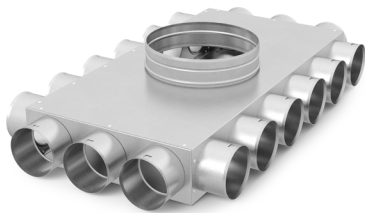


No	Denotation	Measurements [mm]							Weight [kg]
		ØD	Ød	A	B	C	H	h	
1	KLO-IV-16x63/fi200-OC	198	68	530	250	80	45	55	2,90
2	KLO-IV-16x75/fi200-OC	198	78	600	250	90	45	55	3,20
3	KLO-IV-16x90/fi200-OC	198	93	690	250	105	45	55	3,50

OC - galvanised steel sheet



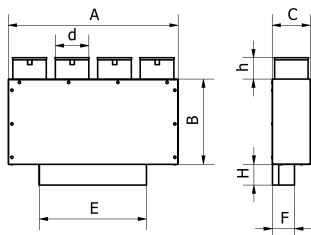
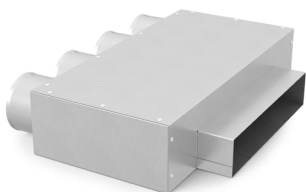
16. DISTRIBUTING BOX KLO-IV



No	Denotation	Measurements [mm]							Weight [kg]
		ØD	Ød	A	B	C	H	h	
1	KLO-IV-18x63/fi200-OC	198	68	530	270	80	45	55	3,20
2	KLO-IV-18x75/fi200-OC	198	78	600	300	90	45	55	3,70
3	KLO-IV-18x90/fi200-OC	198	93	690	350	105	45	55	4,00

OC - galvanised steel sheet

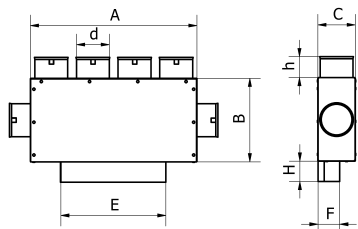
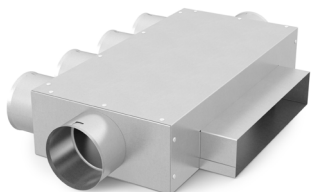
17. PASS-TROUGH BOX SRP



No	Denotation	Measurements [mm]								Weight [kg]
		Ød	E	F	A	B	C	H	h	
1	SRP-250x50/4x63-OC	68	250	50	400	200	80	50	50	1,40
2	SRP-250x50/4x75-OC	78	250	50	400	200	90	50	50	1,50
3	SRP-250x50/4x90-OC	93	250	50	460	200	105	50	50	1,60

OC - galvanised steel sheet

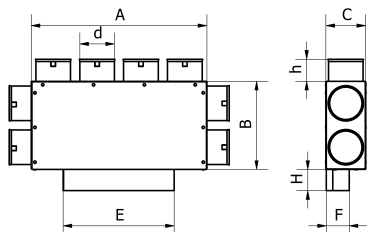
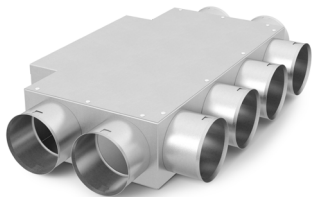
18. PASS-TROUGH BOX SRP



No	Denotation	Measurements [mm]								Weight [kg]
		Ød	E	F	A	B	C	H	h	
1	SRP-250x50/6x63-OC	68	250	50	350	200	80	50	50	1,40
2	SRP-250x50/6x75-OC	78	250	50	400	200	90	50	50	1,45
3	SRP-250x50/6x90-OC	93	250	50	460	200	105	50	50	1,60

OC - galvanised steel sheet

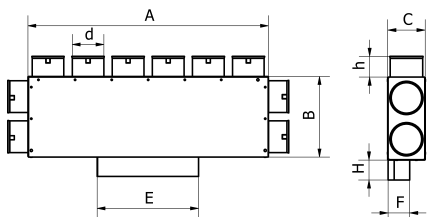
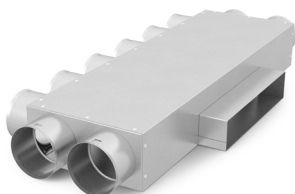
19. PASS-TROUGH BOX SRP



No	Denotation	Measurements [mm]								Weight [kg]
		Ød	E	F	A	B	C	H	h	
1	SRP-250x50/8x63-OC	68	250	50	350	200	80	50	50	1,90
2	SRP-250x50/8x75-OC	78	250	50	400	200	90	50	50	2,00
3	SRP-250x50/8x90-OC	93	250	50	460	200	105	50	50	2,15

OC - galvanised steel sheet

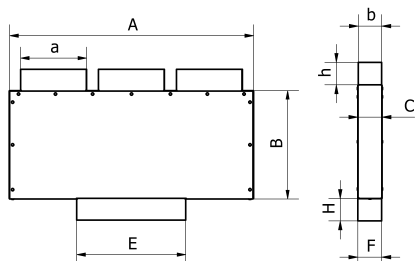
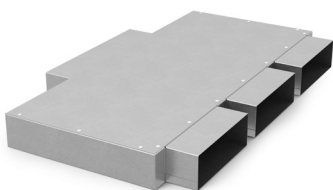
20. PASS-TROUGH BOX SRP



No	Denotation	Measurements [mm]								Weight [kg]
		Ød	E	F	A	B	C	H	h	
1	SRP-250x50/10x63-OC	68	250	50	600	200	80	50	50	2,00
2	SRP-250x50/10x75-OC	78	250	50	600	200	90	50	50	3,10
3	SRP-250x50/10x90-OC	93	250	50	690	200	105	50	50	3,30

OC - galvanised steel sheet

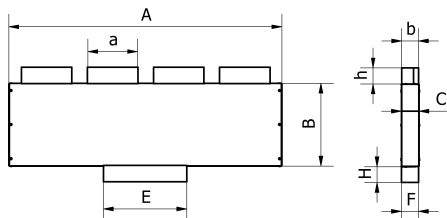
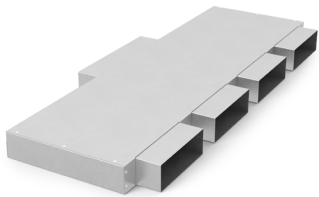
21. PASS-TROUGH BOX SRP



No	Denotation	Measurements [mm]									Weight [kg]
		E	F	A	B	C	H	h	a	b	
1	SRP-250x50/3x150x50-OC	250	50	565	250	55	50	50	150	50	1,90

OC - galvanised steel sheet

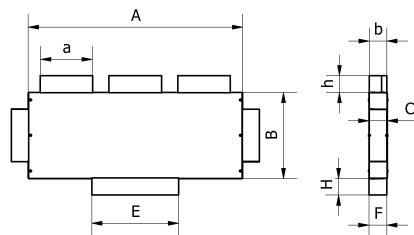
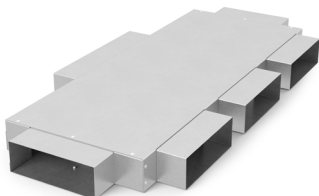
22. PASS-TROUGH BOX SRP



No	Denotation	Measurements [mm]									Weight [kg]
		E	F	A	B	C	H	h	a	b	
1	SRP-250x50/4x150x50-OC	250	50	826	250	55	50	50	150	50	3,70

OC - galvanised steel sheet

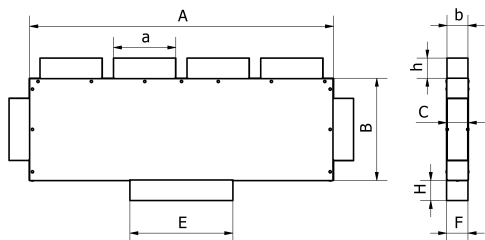
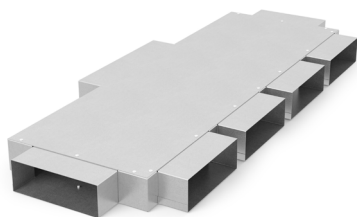
23. PASS-TROUGH BOX SRP



No	Denotation	Measurements [mm]									Weight [kg]
		E	F	A	B	C	H	h	a	b	
1	SRP-250x50/5x150x50-OC	250	50	625	250	55	50	50	150	50	3,00

OC - galvanised steel sheet

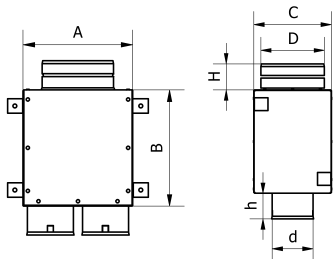
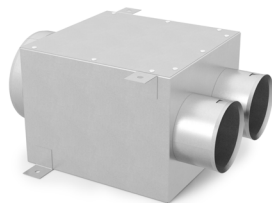
24. PASS-TROUGH BOX SRP



No	Denotation	Measurements [mm]									Weight [kg]
		E	F	A	B	C	H	h	a	b	
1	SRP-250x50/6x150x50-OC	250	50	745	250	54	50	50	150	50	2,60

OC - galvanised steel sheet

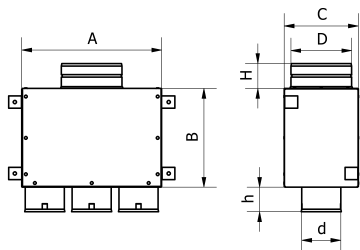
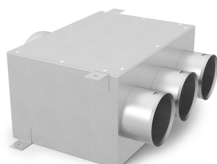
25. PASS-TROUGH BOX SRP



No	Denotation	Measurements [mm]							Weight [kg]
		ØD	Ød	A	B	C	H	h	
1	SRP-2x63/fi125-OC	123	68	180	200	150	45	55	0,90
2	SRP-2x75/fi125-OC	123	78	200	200	150	45	55	1,00
3	SRP-2x90/fi125-OC	123	93	230	200	150	45	55	1,10

OC - galvanised steel sheet

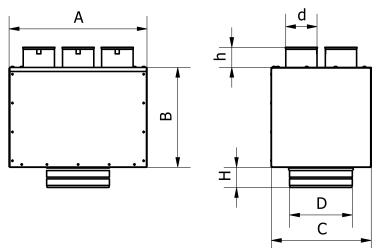
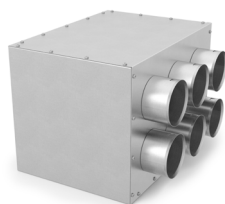
26. PASS-TROUGH BOX SRP



No	Denotation	Measurements [mm]							Weight [kg]
		ØD	Ød	A	B	C	H	h	
1	SRP-3x63/fi125-OC	123	68	320	200	150	50	50	1,20
2	SRP-3x75/fi125-OC	123	78	380	200	150	50	50	1,30
3	SRP-3x90/fi125-OC	123	93	400	200	150	50	50	1,60

OC - galvanised steel sheet

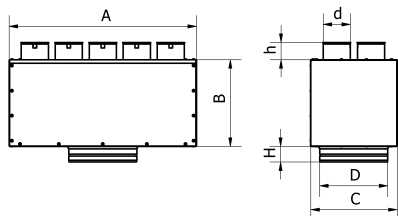
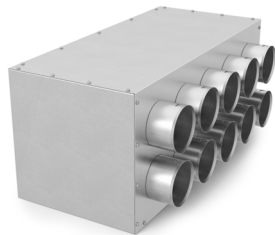
27. PASS-TROUGH BOX SRP



No	Denotation	Measurements [mm]							Weight [kg]
		ØD	Ød	A	B	C	H	h	
1	SRP-6x63/fi160-OC	158	68	320	250	250	45	50	3,20
2	SRP-6x75/fi160-OC	158	78	350	250	250	50	50	3,40
3	SRP-6x90/fi160-OC	158	93	400	250	250	45	50	3,50

OC - galvanised steel sheet

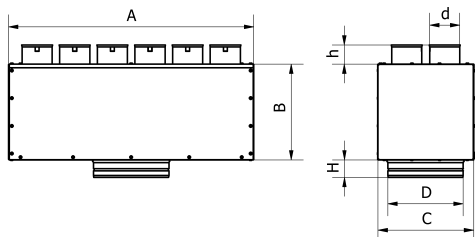
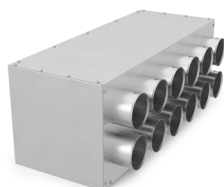
28. PASS-TROUGH BOX SRP



No	Denotation	Measurements [mm]							Weight [kg]
		ØD	Ød	A	B	C	H	h	
1	SRP-10x63/fi160-OC	158	68	500	250	250	45	50	4,50
2	SRP-10x75/fi160-OC	158	78	545	250	250	45	50	4,70
3	SRP-10x90/fi160-OC	158	93	600	250	250	45	50	5,00

OC - galvanised steel sheet

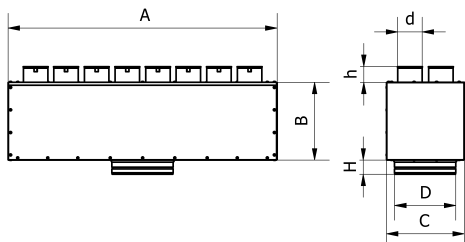
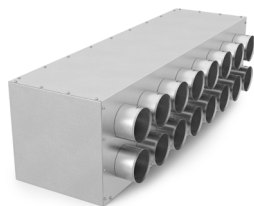
29. PASS-TROUGH BOX SRP



No	Denotation	Measurements [mm]							Weight [kg]
		ØD	Ød	A	B	C	H	h	
1	SRP-12x63/fi200-OC	198	68	580	250	250	45	50	5,20
2	SRP-12x75/fi200-OC	198	78	645	250	250	45	50	5,50
3	SRP-12x90/fi200-OC	198	93	720	250	250	45	50	5,90

OC - galvanised steel sheet

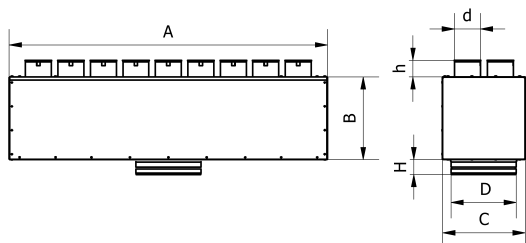
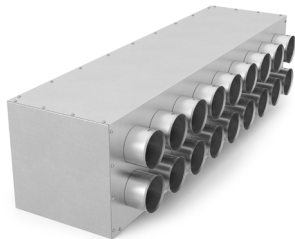
30. PASS-TROUGH BOX SRP



No	Denotation	Measurements [mm]							Weight [kg]
		ØD	Ød	A	B	C	H	h	
1	SRP-16x63/fi200-OC	198	68	680	250	250	45	50	6,60
2	SRP-16x75/fi200-OC	198	78	870	250	250	45	50	7,00
3	SRP-16x90/fi200-OC	198	93	1110	250	250	45	50	7,50

OC - galvanised steel sheet

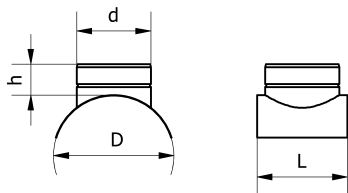
31. PASS-TROUGH BOX SRP



No	Denotation	Measurements [mm]							Weight [kg]
		ØD	Ød	A	B	C	H	h	
1	SRP-18x63/fi200-OC	198	68	860	250	250	45	50	7,20
2	SRP-18x75/fi200-OC	198	78	970	250	250	45	50	7,70
3	SRP-18x90/fi200-OC	198	93	1240	250	250	45	50	8,30

OC - galvanised steel sheet

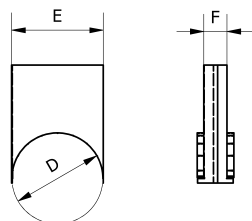
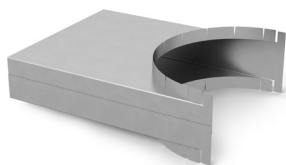
32. COLAR SADDLE TS



No	Denotation	Measurements [mm]				Weight [kg]
		ØD	Ød	h	L	
1	TS200/125-OC	200	123	55	150	0,20

OC - galvanised steel sheet

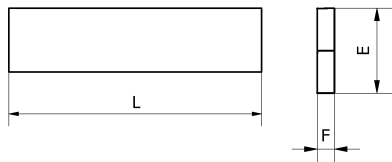
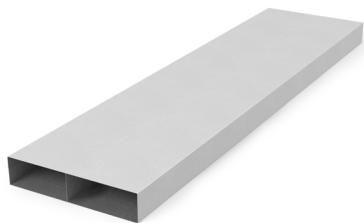
33. COLAR SADDLE TR



No	Denotation	Measurements [mm]			Weight [kg]
		ØD	E	F	
1	TR200/250x50-OC	200	250	50	0,20

OC - galvanised steel sheet

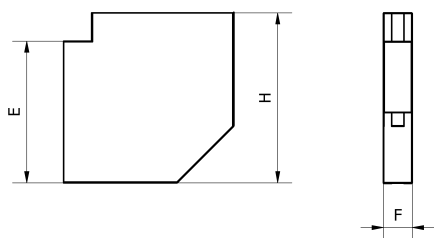
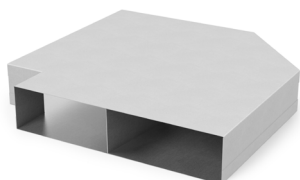
34. STRAIGHT RECTANGULAR DUCT KP



No	Denotation	Measurements [mm]			Weight [kg]
		E	F	L*	
1	KP250x50/1000-OC-W	250	50	1000	2,65

* lengths 500 mm and 250 mm upon request
OC - galvanised steel sheet

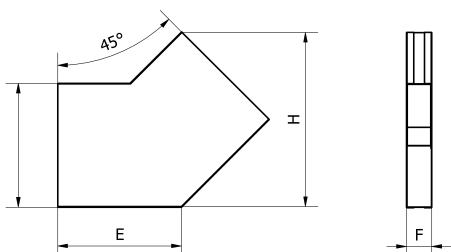
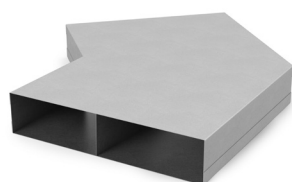
35. ELBOW 90° KL



No	Denotation	Measurements [mm]			Weight [kg]
		E	F	H	
1	KL250x50/90-OC	250	50	300	0,90

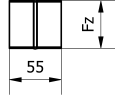
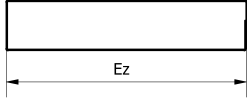
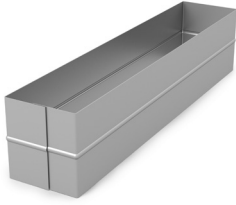
OC - galvanised steel sheet

36. ELBOW 45° KL



No	Denotation	Measurements [mm]			Weight [kg]
		E	F	H	
1	KL250x50/45-OC	250	50	350	1,15

OC - galvanised steel sheet

37. INNER CONNECTOR ZW/2

No	Denotation	Measurements [mm]		Weight [kg]
		Ez	Fz	
1	ZWP250x50/2-OC	250	50	0,12

OC - galvanised steel sheet