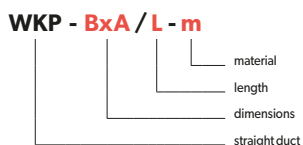
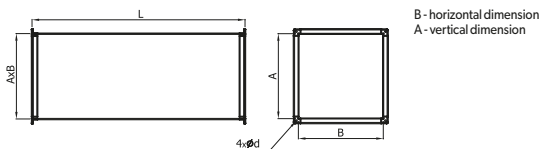
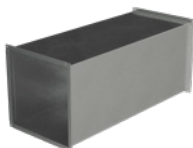
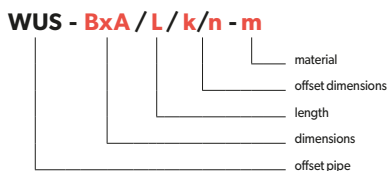
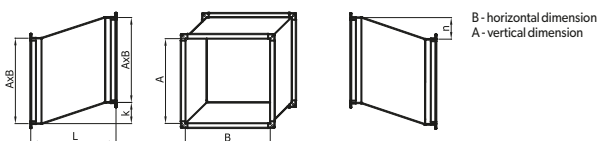


**1. STRAIGHT DUCT - WKP**



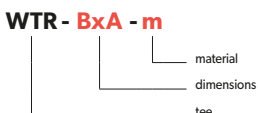
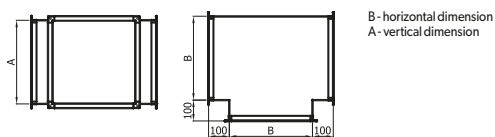
Application	P	P	P - industrial processes
	O	O	O - air heating
Material	X	-	X - chrome-nickel steel sheet 1.4301
	-	OC	OC - galvanised steel sheet

**2. OFFSET PIPE - WUS**



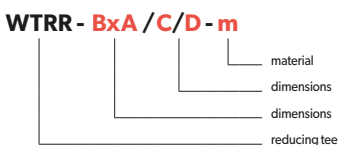
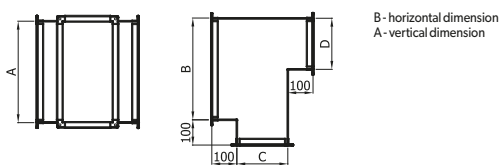
Application	P	P	P - industrial processes
	O	O	O - air heating
Material	X	-	X - chrome-nickel steel sheet 1.4301
	-	OC	OC - galvanised steel sheet

**3. TEE - WTR**



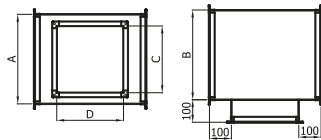
Application	P	P	P - industrial processes
	O	O	O - air heating
Material	X	-	X - chrome-nickel steel sheet 1.4301
	-	OC	OC - galvanised steel sheet

**4. REDUCING TEE - WTRR**



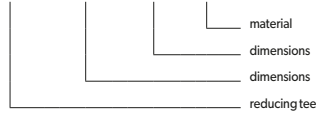
Application	P	P	P - industrial processes
	O	O	O - air heating
Material	X	-	X - chrome-nickel steel sheet 1.4301
	-	OC	OC - galvanised steel sheet

**5. REDUCING TEE - WTRP**



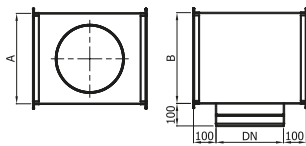
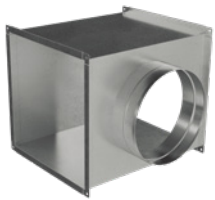
B - horizontal dimension  
A - vertical dimension

**WTRP - BxA / CxD - m**



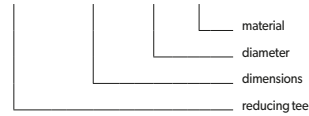
Application	P	P	P - industrial processes
	O	O	O - air heating
Material	X	-	X - chrome-nickel steel sheet 1.4301
	-	OC	OC - galvanised steel sheet

**6. REDUCING TEE - WTRO**



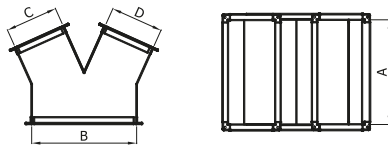
B - horizontal dimension  
A - vertical dimension

**WTRO - BxA / DN - m**



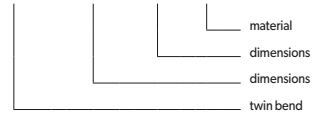
Application	P	P	P - industrial processes
	O	O	O - air heating
Material	X	-	X - chrome-nickel steel sheet 1.4301
	-	OC	OC - galvanised steel sheet

**7. TWIN BEND - WYRP**



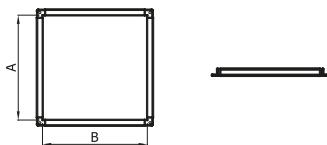
B - horizontal dimension  
A - vertical dimension

**WYRP - BxA / C/D - m**



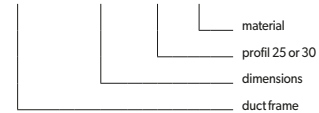
Application	P	P	P - industrial processes
	O	O	O - air heating
Material	X	-	X - chrome-nickel steel sheet 1.4301
	-	OC	OC - galvanised steel sheet

**8. DUCT FRAME - WRAM**



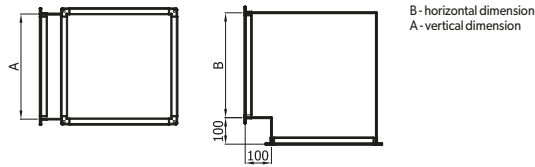
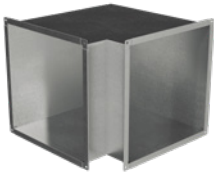
25 - for channels ≤ 1000x1000  
30 - for channels > 1000x1000  
other dimensions upon request

**WRAM - BxA / ... - m**



Application	P	P	P - industrial processes
	O	O	O - air heating
Material	X	-	X - chrome-nickel steel sheet 1.4301
	-	OC	OC - galvanised steel sheet

**9. ELBOW 90° - WKSP**

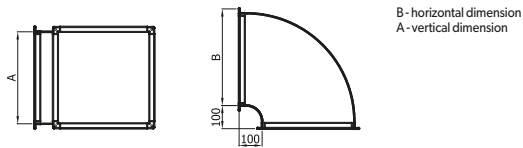


**WKSP - BxA - m**

- material
- dimensions
- elbow

Application	P	P	P - industrial processes
	O	O	O - air heating
Material	X	-	X - chrome-nickel steel sheet 1.4301
	-	OC	OC - galvanised steel sheet

**10. ELBOW 0°- 90° - WLUK**



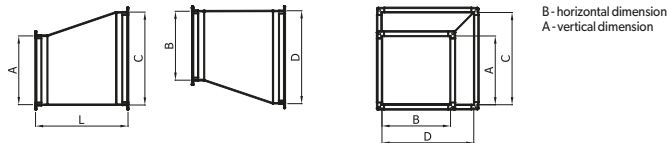
**WLUK - BxA / ... - m**

- material
- angle 0°-90°
- dimensions
- elbow

Application	P	P	P - industrial processes
	O	O	O - air heating
Material	X	-	X - chrome-nickel steel sheet 1.4301
	-	OC	OC - galvanised steel sheet

While ordering indicate the actual angle.

**11. ASYMMETRICAL REDUCER - WRDN**

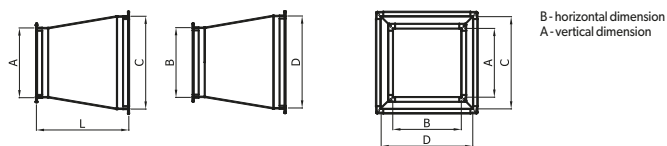


**WRDN - BxA / DxC - m**

- material
- dimensions
- dimensions
- asymmetrical reducer

Application	P	P	P - industrial processes
	O	O	O - air heating
Material	X	-	X - chrome-nickel steel sheet 1.4301
	-	OC	OC - galvanised steel sheet

**12. SYMMETRICAL REDUCER - WRD**

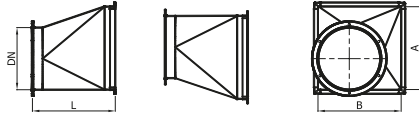


**WRD - BxA / DxC - m**

- material
- dimensions
- dimensions
- symmetrical reducer

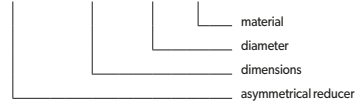
Application	P	P	P - industrial processes
	O	O	O - air heating
Material	X	-	X - chrome-nickel steel sheet 1.4301
	-	OC	OC - galvanised steel sheet

**13. ASYMMETRICAL REDUCER - WRDN**



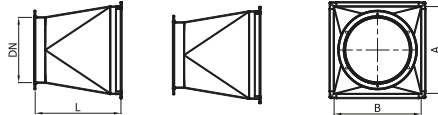
B - horizontal dimension  
A - vertical dimension

**WRDN - BxA / DN - m**



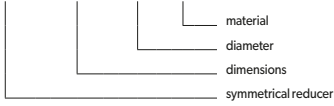
Application	P	P	P - industrial processes
	O	O	O - air heating
Material	X	-	X - chrome-nickel steel sheet 1.4301
	-	OC	OC - galvanised steel sheet

**14. SYMMETRICAL REDUCER - WRD**



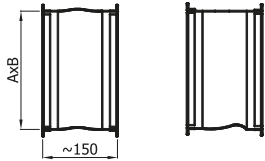
B - horizontal dimension  
A - vertical dimension

**WRD - BxA / DN - m**

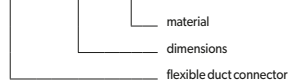


Application	P	P	P - industrial processes
	O	O	O - air heating
Material	X	-	X - chrome-nickel steel sheet 1.4301
	-	OC	OC - galvanised steel sheet

**15. FLEXIBLE DUCT CONNECTOR - WKE**

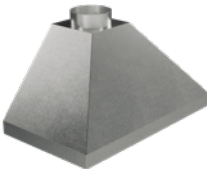


**WKE - BxA - m**

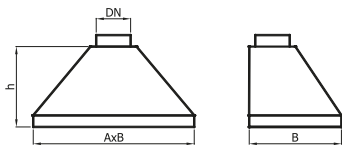
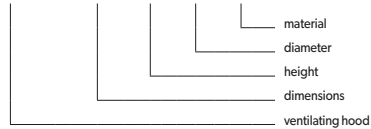


Application	P	P	P - industrial processes
	O	O	O - air heating
Material	X	-	X - chrome-nickel steel sheet 1.4301
	-	OC	OC - galvanised steel sheet

**16. VENTILATING HOOD - WOKAP**



**WOKAP - BxA / H / DN - m**



B - horizontal dimension  
A - vertical dimension

Application	P	P	P - industrial processes
	O	O	O - air heating
Material	X	-	X - chrome-nickel steel sheet 1.4301
	-	OC	OC - galvanised steel sheet