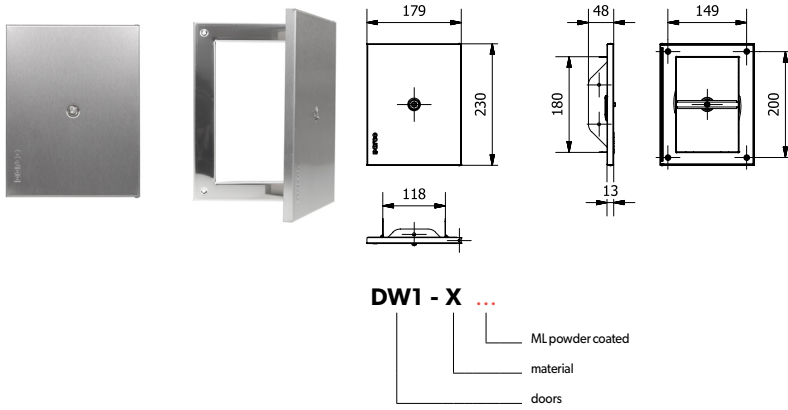


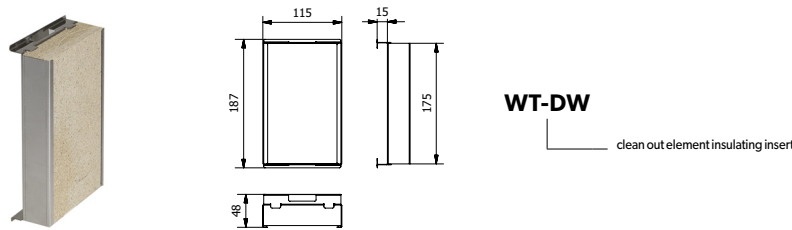
1. DOORS DW1



Destination	W	W - ventilation ducts
	S	S - flue ducts (gas, oil)
	D	D - smoke ducts
Material	X	X - stainless steel 1.4301
Sheet thickness s	6	6 - sheet thickness 0.6 mm

Weight [kg]	0.60
-------------	------

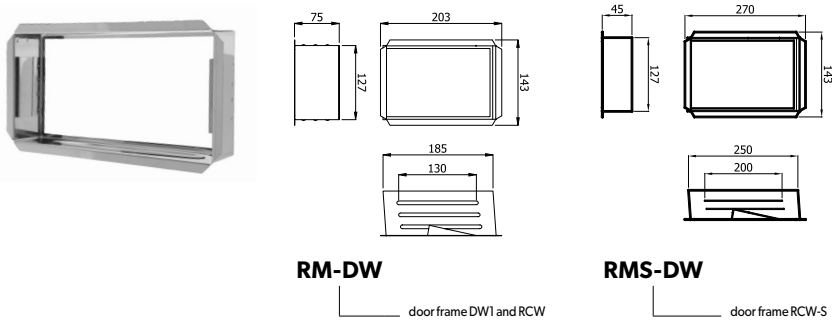
2. CLEAN OUT ELEMENT INSULATING INSERT WT-DW



Destination	W	W - ventilation ducts
	S	S - flue ducts (gas, oil)
	D	D - smoke ducts
Material	X	X - stainless steel 1.4301 (vermiculite)
Sheet thickness s	5	5 - sheet thickness 0.5 mm

Weight [kg]	0.60
-------------	------

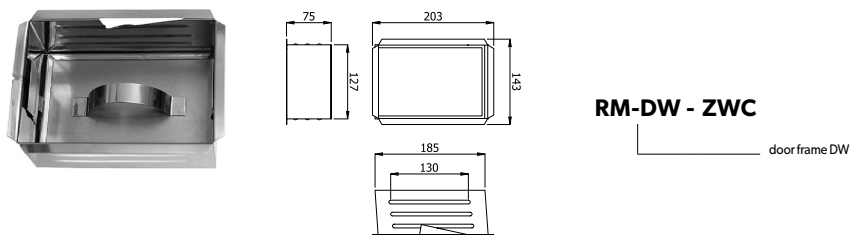
3. DRAUGHT REGULATOR DOOR FRAME RCW RM-DW / RMS-DW



Destination	W	W - ventilation ducts
	S	S - flue ducts (gas, oil)
	D	D - smoke ducts
Material	X	X - stainless steel 1.4301
Sheet thickness s	8	8 - sheet thickness 0.8 mm

Weight [kg]	RM-DW	0.50
	RMS-DW	0.60

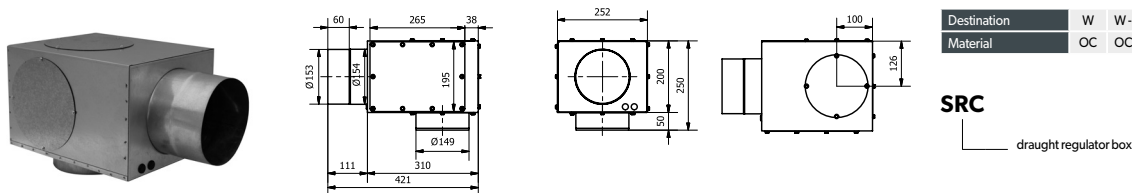
4. DRAUGHT REGULATOR DOOR FRAME WITH CLEAN OUT ELEMENT PLUG RCW RM-DW-ZWC



Destination	W	W - ventilation ducts
	S	S - flue ducts (gas, oil)
	D	D - smoke ducts
Material	X	X - stainless steel 1.4301
Sheet thickness s	8	8 - sheet thickness 0.8 mm

Weight [kg]	0.64
-------------	------

5. DRAUGHT REGULATOR BOX SRC



Destination	W	W - ventilation ducts
Material	OC	OC - galvanized steel sheet