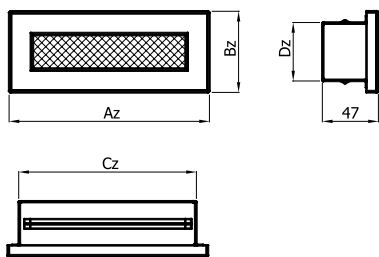
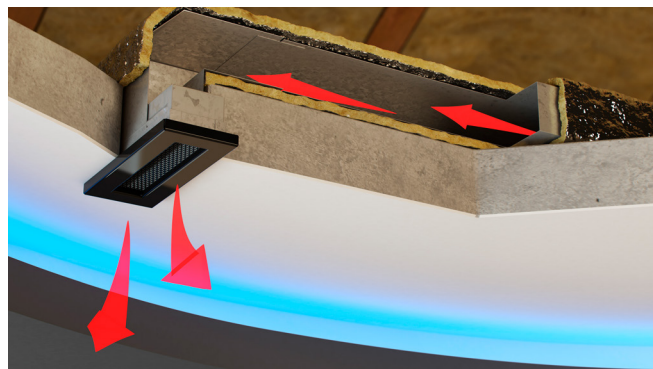
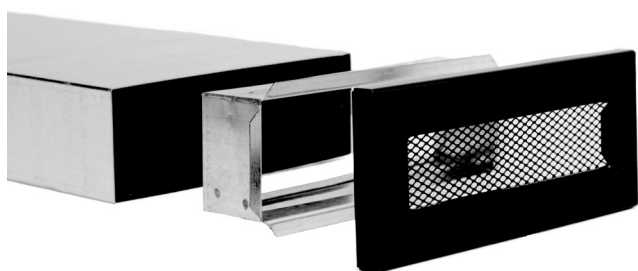
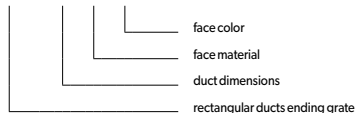


SHIELD GRATES FOR ENDING OF VENTILATION AND HOT AIR DSTRIBUTION RECTANGULAR DUCTS



KRKP x-a-b



Measurements:

Type	Face outer dimensions Az x Bz	Cz	Dz	Cross-section [cm ²]	Weight [kg]
KRKP 150x50	168 x 68	149	49	36	0.30
KRKP 200x50	218 x 68	199	49	66	0.38
KRKP 200x90	218 x 108	199	89	121	0.44
KRKP 250x50	268 x 68	249	49	83	0.44

Destination	W	W	W - ventilation	Face material	
	O	O	O - air heating		
Face material	ML	-	ML - mild steel powder coated	B	white
				CZ	black
				KR	beige
				GR	graphite / 7024
Frame material	OC	OC	OC - galvanised steel sheet	-	-