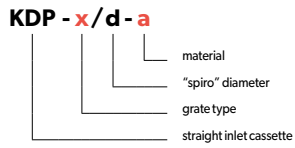


1. STRAIGHT INLET CASSETTE KDP

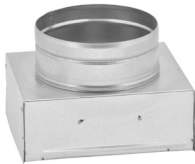


Grate type	K1-Kz1	K14-Kz14	K2-Kz2	K3-Kz3	K4-Kz4	K5-Kz5
A	166	141	166	216	301	456
B	106	141	141	141	166	166
d „spiro“ range	100-110	100-125	100-150	100-150	100-150	100-150
Weight [kg]	0.20	0.23	0.25	0.35	0.55	0.60

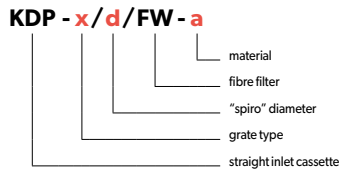
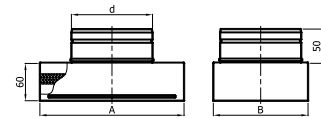


Destination	W	W - ventilation
	O	O - air heating
Material	OC	OC - galvanised steel sheet

2. STRAIGHT INLET CASSETTE WITH FILTER KDP/FW



Grate type	K1-Kz1	K14-Kz14	K2-Kz2	K3-Kz3	K4-Kz4	K5-Kz5
A	166	141	166	216	301	456
B	106	141	141	141	166	166
d „spiro“ range	100-110	100-125	100-150	100-150	100-150	100-150
Weight [kg]	0.40	0.45	0.50	0.70	0.80	0.95

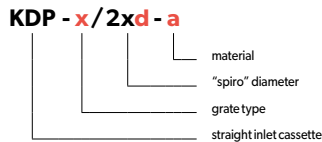
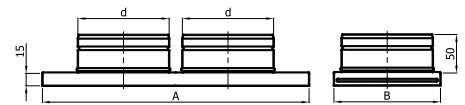


Destination	W	W - ventilation
	O	O - air heating
Material	OC	OC - galvanised steel sheet

3. STRAIGHT DOUBLE INLET CASSETTE KDP



Grate type	K4-Kz4	K5-Kz5
A	301	456
B	166	166
d „spiro“ range	100-125	100-150
Weight [kg]	0.63	0.68

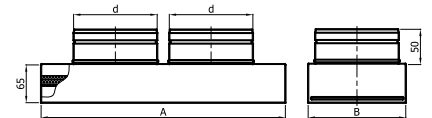


Destination	W	W - ventilation
	O	O - air heating
Material	OC	OC - galvanised steel sheet

4. STRAIGHT DOUBLE INLET CASSETTE WITH FILTER KDP/FW

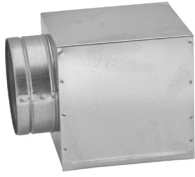


Grate type	K4-Kz4	K5-Kz5
A	301	456
B	166	166
d „spiro“ range	100-125	100-150
Weight [kg]	0.63	0.68

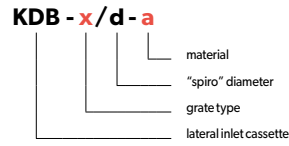
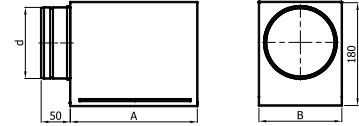


Destination	W	W - ventilation
	O	O - air heating
Material	OC	OC - galvanised steel sheet

5. LATERAL INLET CASSETTE KDB

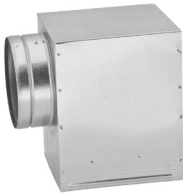


Grate type	K1-Kz1	K14-Kz14	K2-Kz2	K3-Kz3	K4-Kz4	K5-Kz5
A	166	141	166	216	301	456
B	106	141	141	141	166	166
d „spiro“ range	100-110	100-125	100-150	100-150	100-150	100-150
Weight [kg]	0.50	0.60	0.70	0.85	1.15	1.50

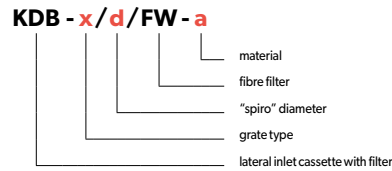
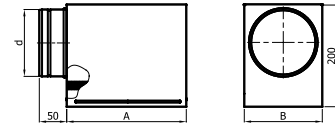


Destination	W	W - ventilation
	O	O - air heating
Material	OC	OC - galvanised steel sheet

6. LATERAL INLET CASSETTE WITH FILTER KDB/FW

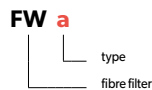
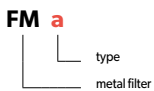
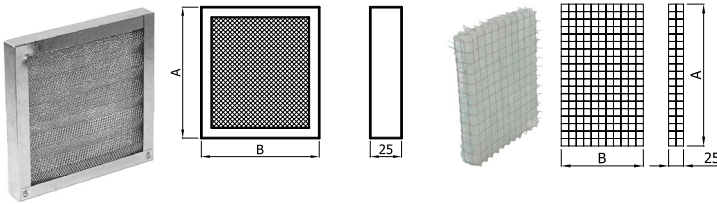


Grate type	K1-Kz1	K14-Kz14	K2-Kz2	K3-Kz3	K4-Kz4	K5-Kz5
A	166	141	166	216	301	456
B	106	141	141	141	166	166
d „spiro“ range	100-110	100-125	100-150	100-150	100-150	100-150
Weight [kg]	0.55	0.65	0.75	0.90	1.20	1.60



Destination	W	W - ventilation
	O	O - air heating
Material	OC	OC - galvanised steel sheet

7. METAL FILTER TO INLET CASSETTES FM, FW



Grate type	K1-Kz1	K14-Kz14	K2-Kz2	K3-Kz3	K4-Kz4	K5-Kz5
A	162	137	162	212	297	452
B	102	137	137	137	162	162
Weight FM [kg]	0.45	0.50	0.55	0.80	0.90	1.20
Weight FW [kg]	0.10	0.10	0.10	0.12	0.15	0.20

Destination	W	W - ventilation
	O	O - air heating
Material FM	M	M - metal
Material FW	-	W - fibre

FW - working temperature up to 120°C