



Building a typical vertical ventilation duct

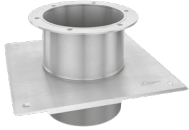
Location	Product	Length [m]
ROOF	Hybrid Turbowent Plus 250 mm	-
	Reducing connecting pipe 250/200	0.20
	Silencer ø 200	0.60
THIRD FLOOR	Pipe ø 200	0.50
	Tee ø 200/150 + Stabilizer CSW2	0.31
SECOND FLOOR	Pipe ø 200	2.69
	Tee ø 200/150 + Stabilizer CSW2	0.31
FIRST FLOOR	Pipe ø 200	2.69
	Tee ø 200/150 + Stabilizer CSW2	0.31
GROUND FLOOR	Pipe ø 200	2.06
	Tee ø 200/150 + Stabilizer CSW2	0.31
	Clean out element with bottom ø 200	0.33

Additional elements		
	Male connector Ø 200 with seal	use on connections, one for each pipe element
	Mounting bracket with rubber cover	fixing to the construction every 2 m

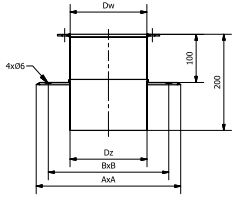
Summary of elements for a vertical sanitary duct in a building with four floors.

No	Elements	Product	Amount [pcs.]
1	Hybrid Turbowent Plus 250 mm	THP250CHAL-BIII	1
2	Reducing connecting pipe 250/200	KPKR250/200-OC	1
3	Silencer ø 200	TLE200/600-OC	1
4	Pipe ø 200	RP200/1000-OC-N	11
5	Tee ø 200/150	TRU200/150-OC-N-U	4
6	Stabilizer CSW2-50	CSW2-50	4
7	Clean out element with bottom ø 200	RPZR200-OC-N	1
8	Male connector ø 200	ZNY200-OC-U	18
9	Mounting bracket	UMO200-U	6

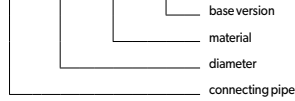
1. CONNECTING PIPE KPK



Dimensions [mm]				
DN	150	200	250	300
Dw	150.6	199.9	250.7	300.0
Dz	151.8	201.1	252.3	301.6
AxA	250x250	330x330	380x380	430x430
BxB	208x208	284x284	330x330	380x380

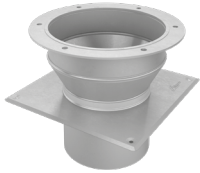


KPK DN - OC - BIII

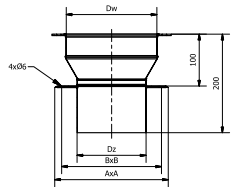


Destination	W	W - ventilation
	O	O - air heating
Material	OC	OC - galvanised steel sheet

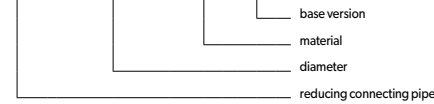
2. REDUCING CONNECTING PIPE KPKR



Dimensions [mm]:					
DN1/DN2	150/125	200/150	250/200	300/250	350/300
Dw	150.6	199.9	250.7	300	349.3
Dz	126.2	151.8	201.1	252.3	301.6
AxA	250x250	250x250	330x330	380x380	430x430
BxB	208x208	208x208	284x284	330x330	380x380



KPKR DN1/DN2 - OC - BIII



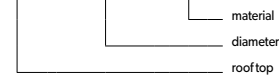
Destination	W	W - ventilation
	O	O - air heating
Material	OC	OC - galvanised steel sheet

3. ROOF TOP WQD

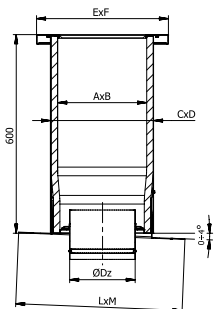


Connecting element allows easy and fast connection of a Turbowent chimney cowl with ventilation duct by using a male joint. Collar of chimney cowl and pipe are to be connected with each other with screws. This solution allows easy disassembling of the chimney cowl in case of maintenance.

WQD AxB/DN - OC



Destination	W	W - ventilation
	O	O - air heating
Material	OC	OC - galvanised steel sheet



Dimensions [mm]							
Diameter DN	150 or 200	150 or 200	200 or 250	200 or 250	250 or 300	300 or 350	350
AxB	220 x 220	220 x 220	270 x 270	270 x 270	320 x 320	360 x 360	410 x 410
CxD	260 x 260	260 x 260	310 x 310	310 x 310	360 x 360	400 x 400	450 x 450
ExF	350 x 350	350 x 350	400 x 400	400 x 400	450 x 450	520 x 520	600 x 600
LxM	450 x 450	450 x 450	500 x 500	500 x 500	550 x 550	600 x 600	680 x 680
Dz	123	148	148	198	248	298	348

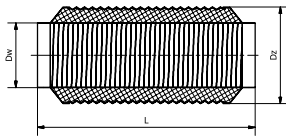
4. SILENCER TE



Silencer is a device used to reduce sounds transferred by ventilation ducts. They are placed between ducts and a Turbowent chimney cowl. Inner side of a silencer is made with perforated pipe. Outer side it is protected by covering that is strengthened with steel wire spirally wound. Filling between layers is made with mineral wool insulation of 25 mm thickness. Silencer is ended with metal collars, which are used to connect with elements of the installation by male joints.



Dimensions [mm]					
DN	125	150	200	250	300
Dw	125	150	200	250	300
Dz2	175	200	300	350	400
L	Length 600 or 1200 mm				



DN	L [mm]	Silencing [dB] for frequency [Hz]						
		125	250	500	1000	2000	4000	8000
125	600	2	7	14	21	26	20	12
150		2	5	12	17	24	17	11
200		1	4	10	16	20	14	11
250		1	4	8	14	16	12	10
300		1	3	6	12	13	10	10
125	1200	7	12	23	39	47	32	18
150		4	8	21	37	40	22	14
200		4	8	20	31	32	20	14
250		2	6	15	27	25	15	13
300		2	6	12	17	14	11	10

5. FIRE DAMPER KPPOZ



If different fire zones are determined in the building a necessity of usage of fire dampers may occur. These devices prevent from spreading the fire. Fire damper can be mounted in vertical ventilation duct or in horizontal part of channel, in stabilizer's cassette. Precise guidelines should be described in the construction project consulted with fire protection authorities. Fire damper is offered in two fire resistance classes EIS (60 and 120) in accordance to EN 1366-2. Fire damper should be mounted in opened position. Closing the flap is caused by a thermal releaser that is reacting when temperature rises above 72°C. After closing, flap is mechanically secured in closed position, it can be re-opened only manually (after cooling down). Any further usage is possible only after replacing the thermal releaser.



Type	EIS fire resistance	Diameter [mm]	Max. ambient temperature
Fire damper 125 mm EI60S	60	123.5	65°C
Fire damper 125 mm EI120S	120	123.5	65°C

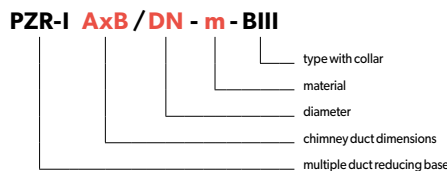
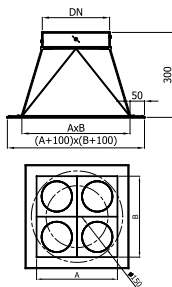
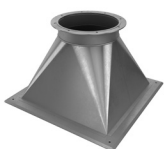
6. BACKFLOW FLAP ZZS



Backflow flap is designed to be mounted in the connection pipe of the kitchen extractor hood (diameter 125 mm). It prevents air and odors from getting into the kitchen from the collective channel. Device is equipped with sleeve which is closed when kitchen hood is off. When it is on - air pumped by ventilator opens it and allows the air to enter the ventilation duct.

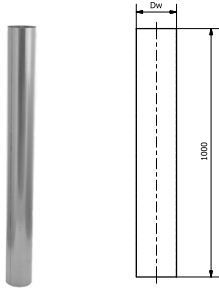


7. MULTIPLE DUCT REDUCING BASE (PIPE SYSTEM) PZR-I



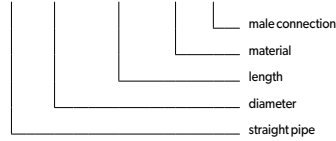
Material	CH	-	CH - chrome-nickel steel sheet 1.4301
	-	OC	OC - galvanised steel sheet

8. STRAIGHT PIPE (PIPE SYSTEM) RP



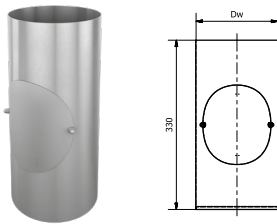
		Dimensions [mm]					
DN		125	150	200	250	300	350
Dw		123.6	150.6	199.9	250.7	300.0	349.3

RP DN / 1000 - m - N



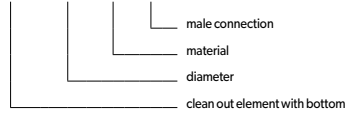
Material	X	-	X - chrome-nickel steel sheet 1.4301
	-	OC	OC - galvanised steel sheet

9. CLEAN OUT ELEMENT WITH BOTTOM (PIPE SYSTEM) WZD



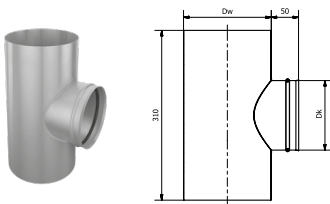
		Dimensions [mm]					
DN		125	150	200	250	300	350
Dw		123.6	150.6	199.9	250.7	300.0	349.3

WZD DN - m - N



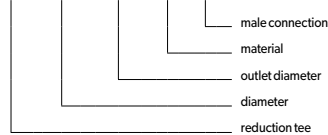
Material	X	-	X - chrome-nickel steel sheet 1.4301
	-	OC	OC - galvanised steel sheet

10. TEE 90 DEGREES WITH SEAL (PIPE SYSTEM) TRU



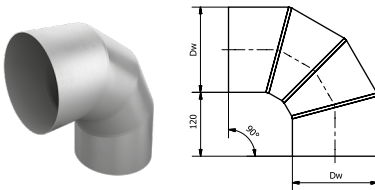
		Dimensions [mm]					
DN		125	150	200	250	300	350
Dw		123.6	150.6	199.9	250.7	300.0	349.3
Dk		127	127	127	127	127	127

TRU DN / 125 - m - N



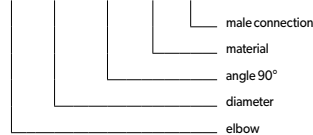
Material	X	-	X - chrome-nickel steel sheet 1.4301
	-	OC	OC - galvanised steel sheet

11. ELBOW 90 DEGREES (PIPE SYSTEM) KS



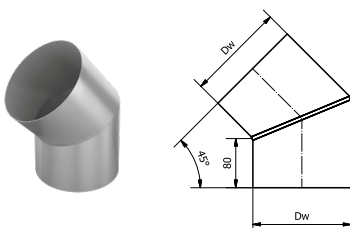
		Dimensions [mm]					
DN		125	150	200	250	300	350
Dw		123.6	150.6	199.9	250.7	300.0	349.3

KS DN / 90 - m - N



Material	X	-	X - chrome-nickel steel sheet 1.4301
	-	OC	OC - galvanised steel sheet

12. ELBOW 45 DEGREES (PIPE SYSTEM) KS



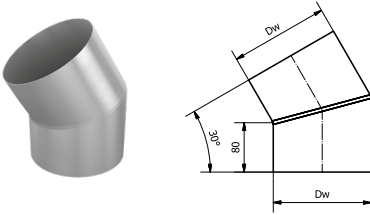
		Dimensions [mm]					
DN		125	150	200	250	300	350
Dw		123.6	150.6	199.9	250.7	300.0	349.3

KS DN / 45 - m - N



Material	X	-	X - chrome-nickel steel sheet 1.4301
	-	OC	OC - galvanised steel sheet

13. ELBOW 30 DEGREES (PIPE SYSTEM) KS



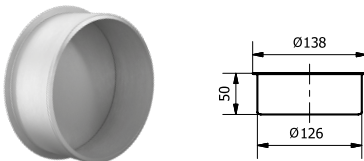
Dimensions [mm]						
DN	125	150	200	250	300	350
Dw	123.6	150.6	199.9	250.7	300.0	349.3

KS DN/30 - m - N



Material	X	-	X - chrome-nickel steel sheet 1.4301
	-	OC	OC - galvanised steel sheet

14. TEE PLUG (PIPE SYSTEM) ZTRU

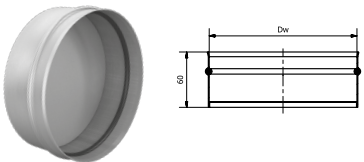


ZTRU125 - m



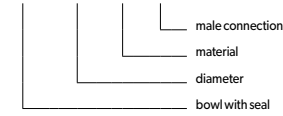
Material	X	-	X - chrome-nickel steel sheet 1.4301
	-	OC	OC - galvanised steel sheet

15. BOWL WITH SEAL (PIPE SYSTEM) MSU



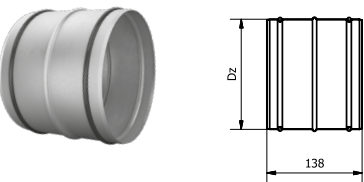
Dimensions [mm]						
DN	125	150	200	250	300	350
Dw	125.6	152.8	202.1	253.3	302.6	352.4

MSU DN - m - N



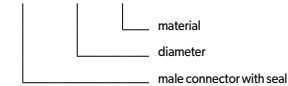
Material	X	-	X - chrome-nickel steel sheet 1.4301
	-	OC	OC - galvanised steel sheet

16. MALE CONNECTOR WITH SEAL (PIPE SYSTEM) ZNU



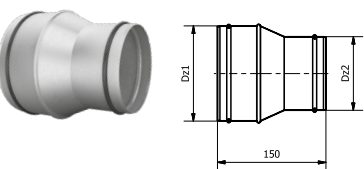
Dimensions [mm]						
DN	125	150	200	250	300	350
Dz	122.6	149.6	198.9	249.7	299.0	348.3

ZNU DN - m



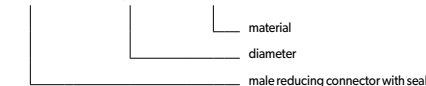
Material	X	-	X - chrome-nickel steel sheet 1.4301
	-	OC	OC - galvanised steel sheet

17. MALE REDUCING CONNECTOR WITH SEAL (PIPE SYSTEM) ZNRU



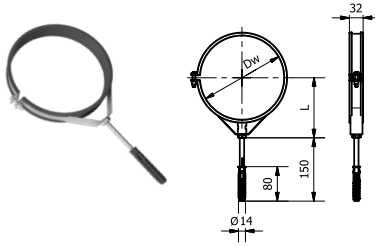
Dimensions [mm]					
DN1/DN2	150/125	200/150	250/200	300/250	350/300
Dz1	149.6	198.9	249.7	299	348.3
Dz2	122.6	149.6	198.9	249.7	299

ZNRU DN1/DN2 - m



Material	X	-	X - chrome-nickel steel sheet 1.4301
	-	OC	OC - galvanised steel sheet

18. MOUNTING BRACKET WITH RUBBER COVER (PIPE SYSTEM) UMO



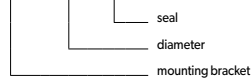
	Dimensions [mm]					
DN	125	150	200	250	300	350
Dw	123.6	150.6	199.9	250.7	300.0	349.3
L	103.8	117.3	141.9	167.3	192.0	216.6

Material	X	X - chrome-nickel steel sheet 1.4301
----------	---	--------------------------------------

For mounting to following surfaces:

- concrete C220/25 class
- full ceramic brick class 15
- full silicate brick class 15
- ceramic construction brick (f.e. Porotherm) class 15

UMO DN - U



19. ADHESIVE WOOL STRIP WITH ALUMINUM FOIL



WELNA-KLIMAFIX - X

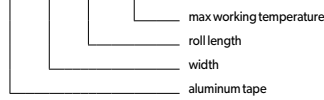


Length	Width	thickness	Amount of m ² in one pack
10.000	1.000	20	10
8.000	1.000	30	8
6.000	1.000	40	6
5.000	1.000	50	5

20. ALUMINUM TAPE 150°C



TA 50x I / 150



Width [mm]	5.00	
Roll length [m]	10	50