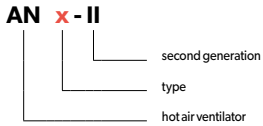


AN HOT AIR VENTILATOR

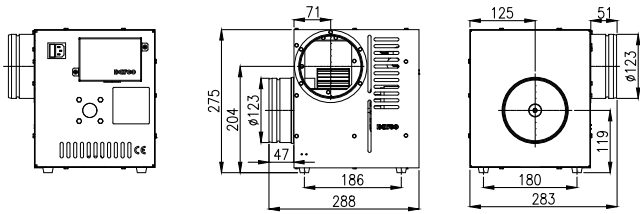


Destination	W	W - supply/exhaust ventilation
	O	O - air heating
Material	OC	OC - galvanised steel sheet

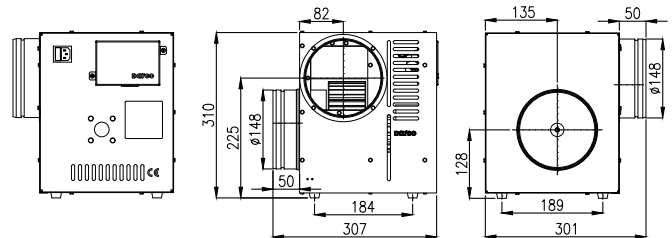
Technical data	AN1-II	AN2-II	AN3-II
Max. airflow [m ³ /h]	490	860	990
Max. pressure [Pa]	150	220	210
Max. transported air temperature [°C]	150		
Acoustic pressure [dB]	65		
Supply voltage [V/Hz]	230/50		
Rated power [W]	50	95	120
Max. current [A]	0.4	0.7	1.1
Power socket fuses	2A		
B1 fuse	100 mA (SCHUSTER 0034.6004)		
Max. ambient temperature [°C]	40		
IP protection class	IP20		
Weight [kg]	5.50	6.70	8.30

Hot air ventilators - types / dimensions

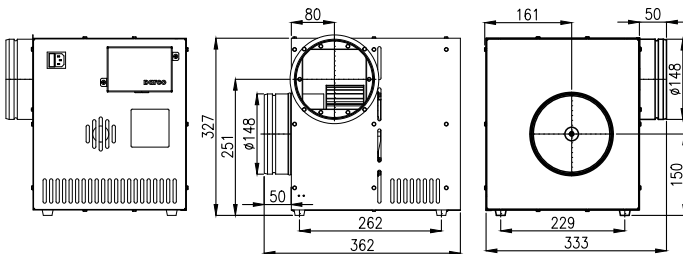
AN1-II



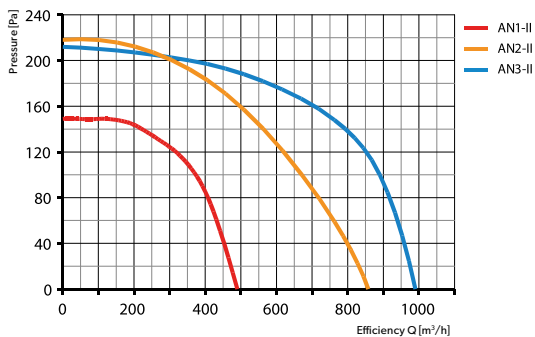
AN2-II



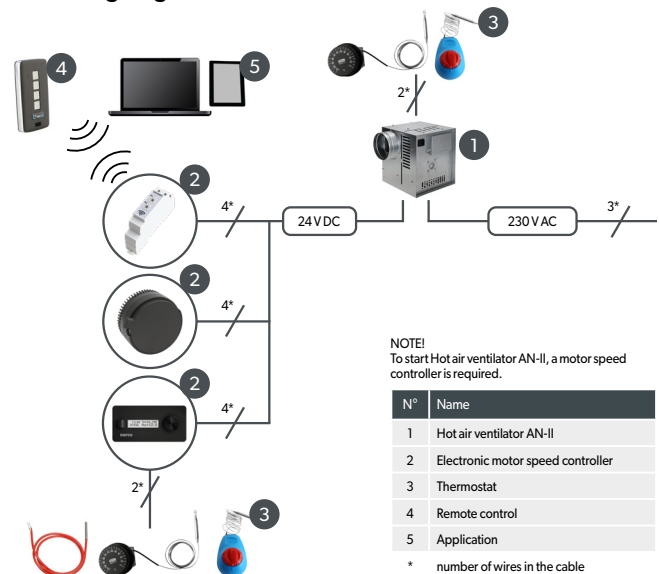
AN3-II



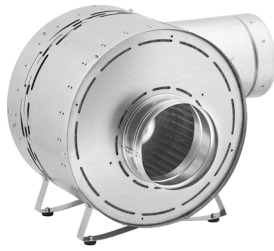
Airflow chart



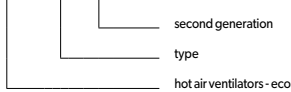
Connecting diagram



ANeco-II HOT AIR VENTILATOR



ANeco x - II

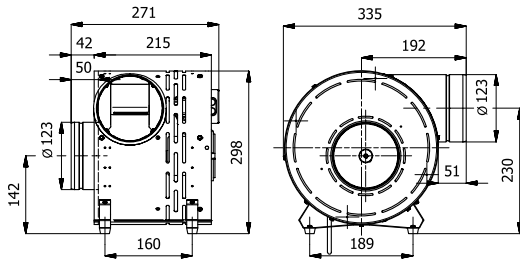


Destination	W	W - supply/exhaust ventilation
	O	O - air heating
Material	OC	OC - galvanised steel sheet

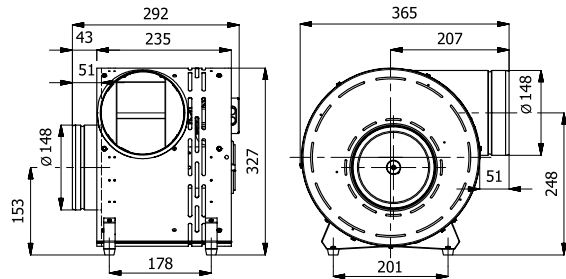
Technical data	ANeco1-II	ANeco2-II	ANeco3-II
Max. airflow [m ³ /h]	490	690	1080
Max. pressure [Pa]	150	180	205
Max. transported air temperature [°C]	150		
Supply voltage [V/Hz]	230/50		
Rated power [W]	30	50	125
Max. current [A]	0.7	0.7	1.4
Max. ambient temperature [°C]	40		
IP protection class	IP20		
Weight [kg]	6.30	7.30	8.30

Hot air ventilators - types / dimensions

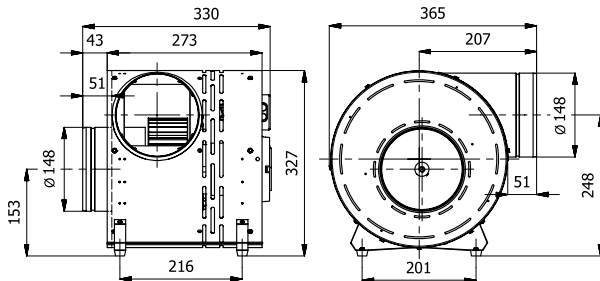
ANeco1-II



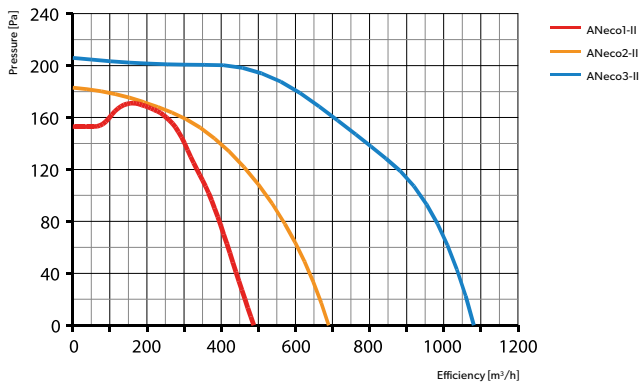
ANeco2-II



ANeco3-II



Airflow chart



Connecting diagram

